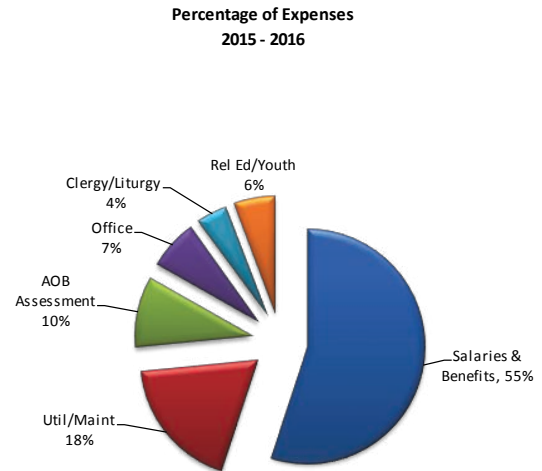


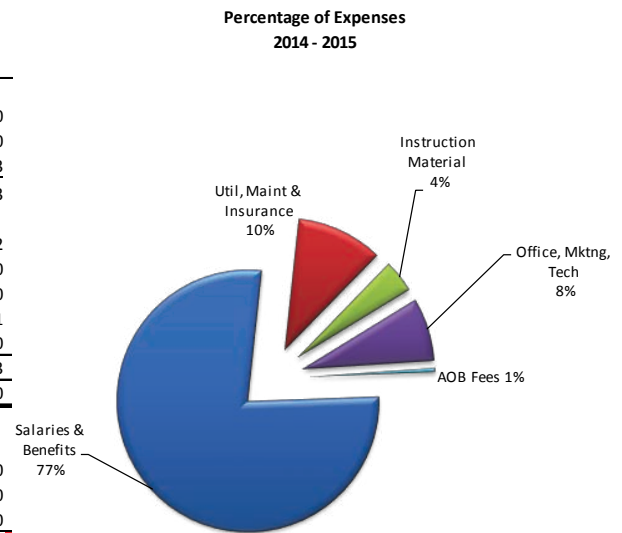
**Cathedral of Mary our Queen  
Annual Financial Summary  
Fiscal Year ended June 30, 2017**

Income	2015-2016	2016-2017	2016-2017
	Actual	Actual	Budget
Offertory	1,261,165	1,337,333	1,309,243
Gifts and Bequests	145,083	121,543	30,000
Rental Income (Church & Rectory) (Net)	65,550	98,535	70,422
Religious Ed, Youth Ministry & Other Programs	69,168	64,868	67,533
Interest on Operating Account, Etc..	28,066	22,728	27,611
<b>Total Operating Income</b>	<b>1,569,032</b>	<b>1,645,006</b>	<b>1,504,809</b>
<b>Expense</b>			
Salaries & Benefits	983,585	1,217,689	1,249,742
Utilities, Maintenance & Property Insurance	394,216	407,112	420,480
Archdiocesan Assessment	209,725	217,089	230,000
Office expense (Equipment Rental, Bank Fees, etc..)	157,674	153,451	170,116
Clergy & Other Liturgy Expenses	100,971	92,348	93,769
Education, Youth Ministry & Other Programs	99,840	124,823	110,875
<b>Total Operating Expense</b>	<b>266,499</b>	<b>1,946,012</b>	<b>2,274,982</b>
<b>Net Operating Income (Loss)</b>	<b>(376,980)</b>	<b>(567,504)</b>	<b>(770,173)</b>
<b>Non-Operating Income Directly Supporting Operations</b>			
Archdiocese Subsidy	137,100	139,846	137,100
Draw from Trust - Facilities Maintenance/Cap Projects	250,000	942,677	600,000
<b>Net Cash from Operations &amp; Subsidies</b>	<b>10,120</b>	<b>515,020</b>	<b>(33,073)</b>
<b>Other Non-Operating Income</b>			
Embracing our Mission - Grant from Archdiocese	250,000	-	81,000
Embracing our Mission - Parish Campaign	19,057	14,202	9,000
Gifts to Preservation Trust Gen'l & Windows	29,161	51,892	33,000
Realized Gain on Investments and Interest	165,766	701,910	167,000
Other Restricted Gifts/Grants	24,230	24,541	10,000
Net Archbishops Lenten Appeal Rebates	97,815	101,399	
Unrealized Gain/(loss) on Investments	(65,392)	-	(65,000)
<b>Total Other Income</b>	<b>520,636</b>	<b>893,944</b>	<b>235,000</b>
<b>Other Expenses</b>			
Distrib. from Trust - Facilities R&M and Cap Project	250,000	942,677	600,000
Additional Subsidy to SCMOQ**	27,235	64,387	23,462
Interest on Debt	127,198	124,021	124,021
Extraordinary & Capital Repairs	141,637	463,159	300,000
<b>Total Other Expense</b>	<b>546,071</b>	<b>1,594,243</b>	<b>1,047,483</b>
<b>Net Other Income</b>	<b>(25,434)</b>	<b>(700,299)</b>	<b>(812,483)</b>
<b>Net Gain (Loss) from operating and investing activities</b>	<b>(15,314)</b>	<b>(185,281)</b>	<b>(845,556)</b>



**School of the Cathedral**

	2015-2016	2015-2016	2016-2017
	Actual	Actual	Budget
Tuition & Fees	3,823,842	3,881,759	3,973,090
Fundraising, Interest & Other	179,072	249,813	197,050
After School ChildCare (Net)	70,812	88,588	59,673
<b>Total Operating Income</b>	<b>4,073,726</b>	<b>4,220,160</b>	<b>4,229,813</b>
Salaries & Benefits	3,137,520	3,246,514	3,223,572
Utilities, Insurance & Maintenance	457,343	444,643	445,870
Text books & Other Instructional Costs	129,181	169,055	157,200
Office, Marketing, Technology, etc..	288,654	322,759	380,241
Archdiocesan Student Fees	20,085	19,697	18,860
<b>Total Operating Expense</b>	<b>4,032,784</b>	<b>4,202,668</b>	<b>4,225,743</b>
<b>Net Operating Income (Loss)</b>	<b>40,942</b>	<b>17,492</b>	<b>4,070</b>
<b>Other Non-Operating Income</b>			
Gifts/Grants/Bequests	101,237	38,651	3,000
Interest/Realized Gain Investments	309,962	102	43,000
Unrealized Gain (Loss) on Investments	(258,428)	296,187	100,000
<b>Total other Income</b>	<b>152,772</b>	<b>334,940</b>	<b>146,000</b>
<b>Other Expenses</b>			
Extraordinary & Capital Repairs	56,000	397,960	54,100
<b>Total Other Expenses</b>	<b>56,000</b>	<b>397,960</b>	<b>54,100</b>
<b>Net Other Income</b>	<b>96,772</b>	<b>(63,020)</b>	<b>91,900</b>
<b>Net Gain (Loss) from operating and investing activities</b>	<b>137,714</b>	<b>(45,529)</b>	<b>95,970</b>
		<b>(44,838)</b>	<b>(690)</b>



## Ministry Report 2017

<b>Parish Registration</b>	<b>2014</b>	<b>2015</b>	<b>2016</b>	<b>June 2017</b>
<b>Total Persons</b>	4,289	5,356	6,084	5,614
<b>Families/Households</b>	1,649	1,746	1,743	1,524

<b>Mass Attendance on Attendance Count Weekend</b>	<b>2014</b>	<b>2015</b>	<b>2016</b>	<b>June 2017</b>
<b>Total Persons</b>	743	844	922	979

<b>Sacraments</b>	<b>2014</b>	<b>2015</b>	<b>2016</b>	<b>June 2017</b>
<b>Baptisms (all ages)</b>	44	64	58	64
<b>1st Communion</b>	81	98	85	84
<b>Confirmation</b>	73	79	80	82
<b>Marriages at CMOQ</b>	16	45	14	17
<b>Funerals</b>	40	31	32	38
<b>People Entering Church via RCIA</b>	11	4	5	6

<b>Religious Education/Faith Formation</b>	<b>2014</b>	<b>2015</b>	<b>2016</b>	<b>June 2017</b>
<b>Students in Elementary Religious Education</b>	269	245	233	248

<b>School of CMOQ Enrollment</b>	<b>Fall 2014</b>	<b>Fall 2015</b>	<b>Fall 2016</b>	<b>Fall 2017</b>
<b>Total # Of Students</b>	442	415	391	381